



Improving Presence - Improving Spaces - Improving Function

TRANSFORMING OUR SPACE FOR MINISTRY AND MISSION

REFURBISHMENT OF THE CRYPT - JULY 2020



TOGETHER WE **CAN**
MAKE IT HAPPEN

RENEWCHRISTCHURCH
www.renewchristchurch.org





THE STORY

THIS IS A STORY ABOUT OUR COMMUNITY, OUR CITY AND THE PEOPLE WHO LIVE HERE. AND IT'S A STORY ABOUT JESUS AND YOU AND ME...

It begins in a simply stated yet bold vision, rooted in an ancient promise that the people of God would be a blessing to all people. A vision which believes that the local church exists to change the world...
one person, one city, one nation at a time.

The story is like a river, fed by many streams, its waters building to a greater and more powerful story yet to be told.

Like a river, the surface of this story is easily seen but the depths are often hidden. On the surface, it's about our Crypt - bricks and mortar, lifts and loos, facilities and furnishings, heating and light.

.....
But in its depths, it's about people and the legacy that you and I can weave into the lives of those we meet... and those we never will.

‘THE GLORY OF THIS PRESENT HOUSE WILL BE GREATER THAN THE GLORY OF THE FORMER HOUSE,’ SAYS THE LORD ALMIGHTY. ‘AND IN THIS PLACE I WILL GRANT PEACE,’ DECLARES THE LORD ALMIGHTY.’ HAGGAI 2:9

It's about the young mum

whose confidence in looking after her newborn has grown through one of our 'Poorly Poppets' clinics, run at Christ Church with the local GP surgery



THE BACKSTORY

The Crypt as we know it was developed in the 1970s by a generation who responded with faith and generosity to God's call to write their own visionary and bold chapter - it was an extraordinary achievement which bore significant fruit in enabling Christ Church to serve and be a blessing to our community.

Chapter after chapter has been added over the years - toddler groups, kids' groups on Sundays, a meeting place

for the elderly, the launch of our own pre-school, youth groups, relationship support, preparation for the Breakfast Run serving homeless people in the City, parenting courses, dads drop-in mornings, meals for internationals living, working and studying in Bristol... the list goes on and on.

Visit the Crypt on any day or evening and see the story continuing to unfold in the lives of countless people.





It's about the boy

whose anxiety has been reduced by his time spent with his Christ Church Transforming Lives for Good coach in school and who now enjoys extra activities and making new friends in the Crypt



But the pages of the chapters are now well-thumbed and the pages are fraying. The Crypt is dated and tired, a warren of poorly-lit areas which suffer from

- ▼ *poor access, being especially inhospitable to disabled members and visitors*
- ▼ *inadequate air circulation and an absence of natural light*
- ▼ *inadequate toilet facilities*
- ▼ *inadequate lighting and badly decayed decor throughout*
- ▼ *an antiquated heating system which is inefficient, expensive to operate, difficult to maintain and in urgent need of replacement*
- ▼ *a lack of flexible breakout space and proper circulation which limits what we can offer*



It's about the teenage girl

who now looks to her future life with hope because she knows that what God says about her identity is more important than anything she might read online or hear from her friends



In short, the present configuration and state of the Crypt now actively inhibits much of our vision. As the Crypt is so closely linked with the rest of our building, its ageing condition has other implications which we will address in this refurbishment

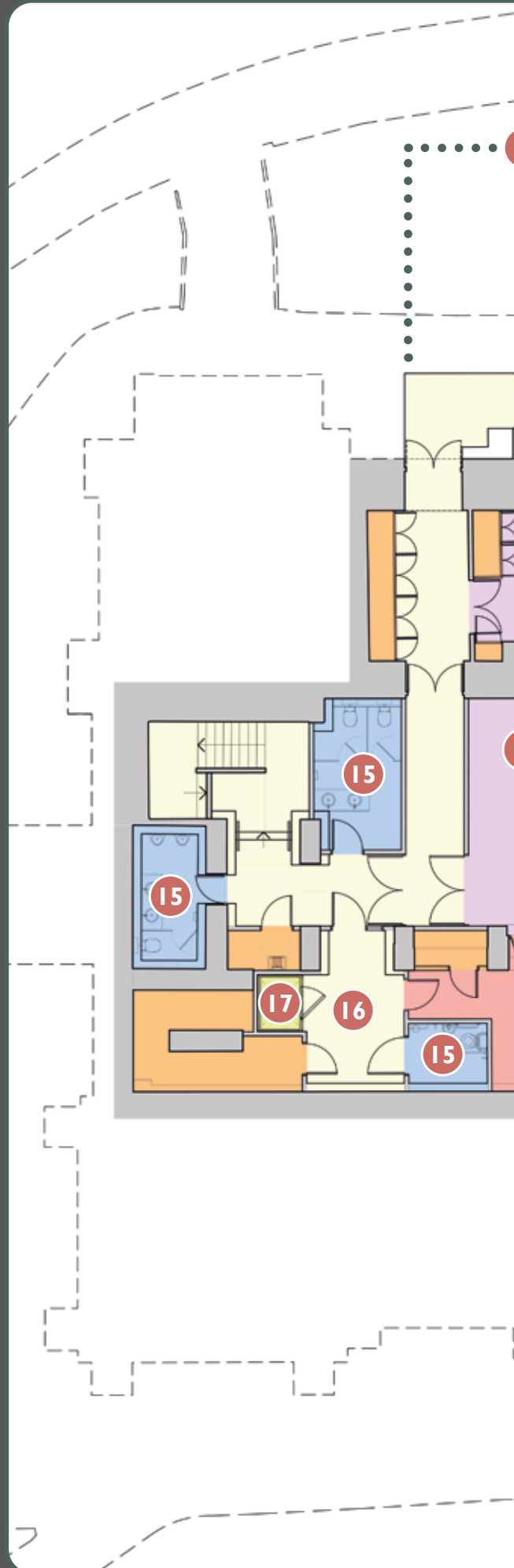
- ▼ *We will significantly lighten the environmental impact of our building, for example, by modernising the boiler to make our heating more eco-efficient, and introducing low-energy lighting throughout*
- ▼ *Installing a lift between the Crypt and Main Church will make our whole site accessible to everyone and remove the health and safety risk of people carrying hot food up and down stairs*
- ▼ *At the same time, we will address the issues of access, lighting, heating and décor in the foyer, giving a far more attractive entry point to the Main Church*

THE BENEFITS

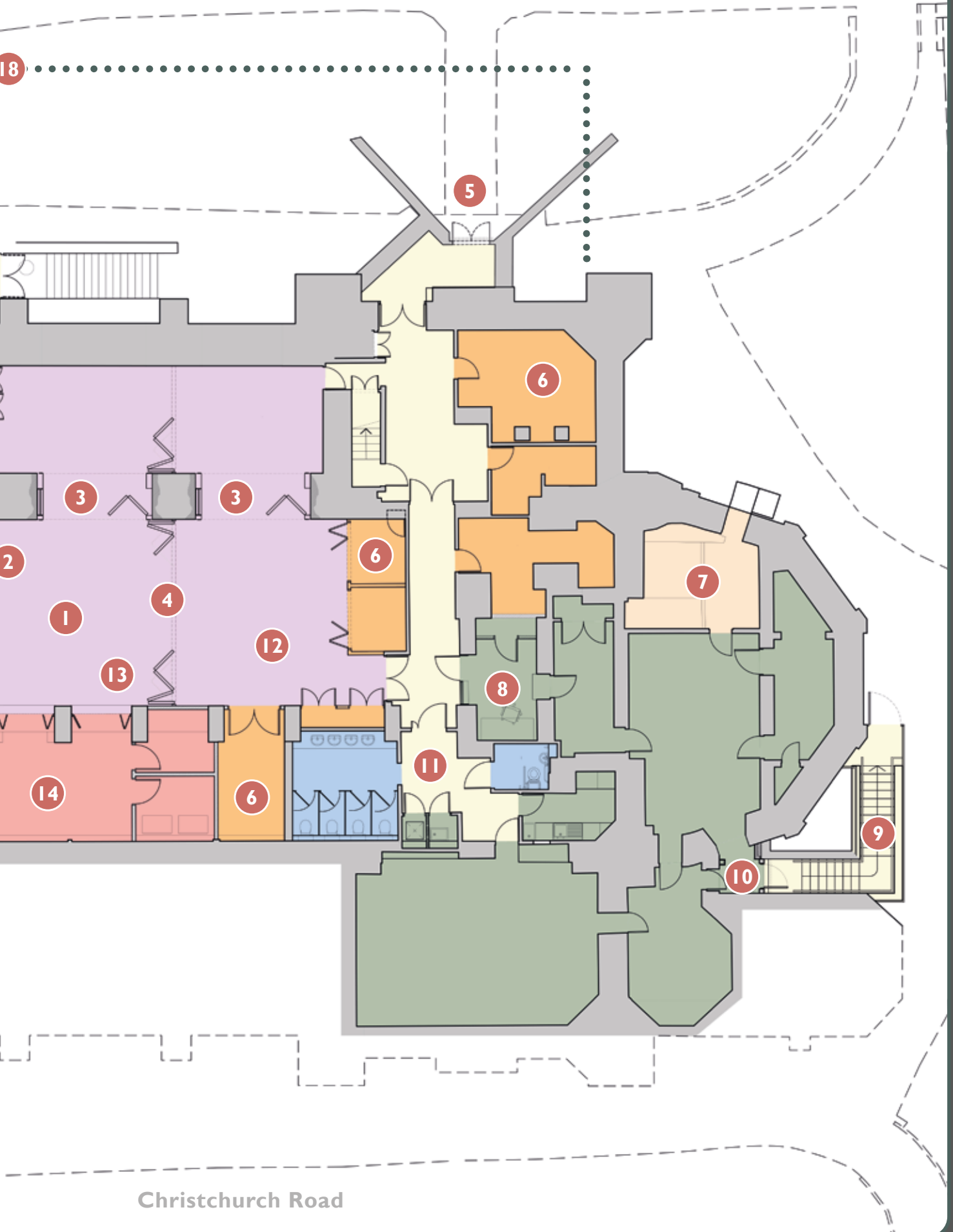
This phase of RENEW will provide much needed improvement and benefits to all the individuals and groups who use the Crypt each week. Here are just some of the benefits this work will bring...

- 1 All rooms redecorated with new ceilings, wall and floor finishes to give a light and airy feel.
- 2 New ventilation system to the whole Crypt.
- 3 Opening up between the main Crypt room and the Brentnall Room giving us more flexible use of the space for differing activities.
- 4 New sound proof full height folding doors enabling the large space to be divided into up to four separately accessible smaller rooms.
- 5 Improved pedestrian access from Clifton Park.
- 6 New and improved storage areas.
- 7 Replacement boilers serving both the Crypt and main church - with modern energy efficient controls.
- 8 New pre-school reception and office.
- 9 New child-friendly staircase to pre-school garden.
- 10 New lobby with windows allowing natural light into pre-school rooms.
- 11 Reconfigured pre-school layout to be fully compliant with OFSTED safeguarding requirements.
- 12 New LED lighting throughout.
- 13 New installed AV facilities.
- 14 Relocated and modernised kitchen with larger serving hatch.
- 15 New modern hygienic male, female and accessible toilet facilities.
- 16 Level access throughout, removing ramps and steps - improving accessibility for buggies and wheelchairs.
- 17 Passenger lift to ground floor foyer providing internal accessibility between the church and the Crypt for the first time.
- 18 Outline of extension and new entrance (future phase - subject to planning consent).

(More detailed plans are available to view on the website - www.renewchristchurch.org)



Clifton Park



Christchurch Road



It's about the married couple

who have been inspired to offer themselves as marriage mentors because of the difference made to their own relationship through attending the Marriage Course at Christ Church

EVERYONE SHOULD GIVE WHAT HE OR SHE HAS DECIDED IN THEIR HEART TO GIVE, NOT RELUCTANTLY OR UNDER COMPULSION, FOR GOD LOVES A CHEERFUL GIVER. 2 CORINTHIANS 9:7

Configured differently, and refurbished, we could do so much more to move the story on. The new Crypt will also enable us to expand our facilities to provide for additional teaching ministry and for training in:

evangelism, pastoral care, workplace, prayer ministry, social justice...

But this story will not end there. We are still intent on securing the necessary planning permission to open up our building yet further with something very like the proposed extension - watch this space!

Read on for details of the different ways in which you can get involved, through your gifts of time and service, and through your financial support.

Rising to this exciting challenge and opportunity will mean meeting two financial targets

- 1) *raising the capital costs for the refurbishment of the Crypt, and*
- 2) *increasing regular giving to enable our ongoing ministry and mission and to fund a new Centre Manager.*



FUNDING THE CRYPT REFURBISHMENT

It will cost up to £1.5 million to carry out the Crypt refurbishment in full. As the illustration on the back cover shows, we have most of this already, but we will need to raise a further £500,000. As these works are mainly internal renovations, we are seeking these funds from within our church family. For the later Crypt extension, which is more publicly visible, we will also be approaching trust funds and the community at large.

£500,000 is roughly equal to about one year of our current income. The illustration shows how 400 members of Christ Church working together could meet this target. Where might you belong in this picture? Remember that regular giving builds up; a pledge of just £5 a week for three years is worth nearly £1,000 including Gift Aid.

Please pray and consider what God is asking you to give to enable the refurbishment to happen.

A project of this size requires the whole church family to get behind this vision, and so we are asking you to pray that God will lead you as you consider your response, then to let us know by completing the enclosed Pledge Form and returning it on or before our Annual Church Family Meeting on **Sunday 26th April.**

FUNDING OUR ONGOING MINISTRY AND MISSION



It's about the elderly people

who see the Crypt as a friendly, welcoming and comfortable meeting place where they can access help through clinics run by health care professionals

Our everyday costs are mainly on our employed staff, our 'parish share' (supporting ministry across the diocese), our gatherings and events, building maintenance and utilities, and supporting mission outside the parish. Our income comes mainly from giving by the church family (with Gift Aid), plus some income from the rental of property.

Following the refurbishment, we expect a flurry of new activities and ministries to start within the Crypt, as has happened following the opening of The Spire coffee shop. We also want to make sure we care and maintain these new facilities properly. Therefore, we want to appoint a Centre Manager to support and coordinate these activities, and ensure our space realises its full potential.

In order to achieve this - and to cover other new ministry and mission opportunities that will become possible - we are seeking to increase our regular giving by £50,000 per year (this is roughly a 10% increase on our current income).

We are particularly asking

- ▶ **anyone who is not yet regularly giving towards the work of Christ Church financially to prayerfully consider doing so**
- ▶ **anyone who hasn't reviewed their regular giving for some time to consider whether you can increase your giving now**

Even a small regular monthly amount can make a big difference, and with Gift Aid added for every £1 you give, the government give an additional 25p. Please complete the enclosed Pledge Form and return it on or before our Annual Church Family Meeting on Sunday 26th April.

.....
As with all giving at Christ Church, details of your pledge will only be seen by our Operations Manager and Gift Aid Administrator.

It's about the Chinese woman

whose sense of isolation in a strange culture has been replaced by confidence because of the English coaching she has received at Christ Church



NOW TO HIM WHO IS ABLE TO DO IMMEASURABLY MORE THAN ALL WE ASK OR IMAGINE, ACCORDING TO HIS POWER THAT IS AT WORK WITHIN US, TO HIM BE GLORY IN THE CHURCH AND IN CHRIST JESUS THROUGHOUT ALL GENERATIONS, FOR EVER AND EVER! AMEN. EPHESIANS 3:20-21

God's people have never had the luxury of building anything just for themselves.

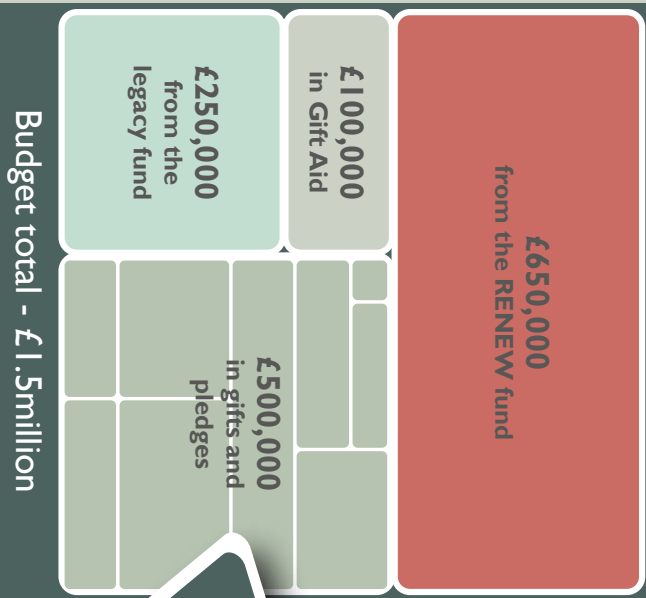
Refurbishing our Crypt will help us demonstrate the mercy, justice, friendship and hope of Jesus to our community and our city. This is called the Kingdom of God... where Jesus changes everything...

For this to happen, you and I need to step up and say **'I'm in'**. Because in this new chapter there are many new characters, and one of them could be you. What is your part in this unfolding story?

This is a story about our community, our city and the people who live here. And it's a story about Jesus and you and me...

And the defining moment is **NOW**

WHERE IS THE MONEY COMING FROM?

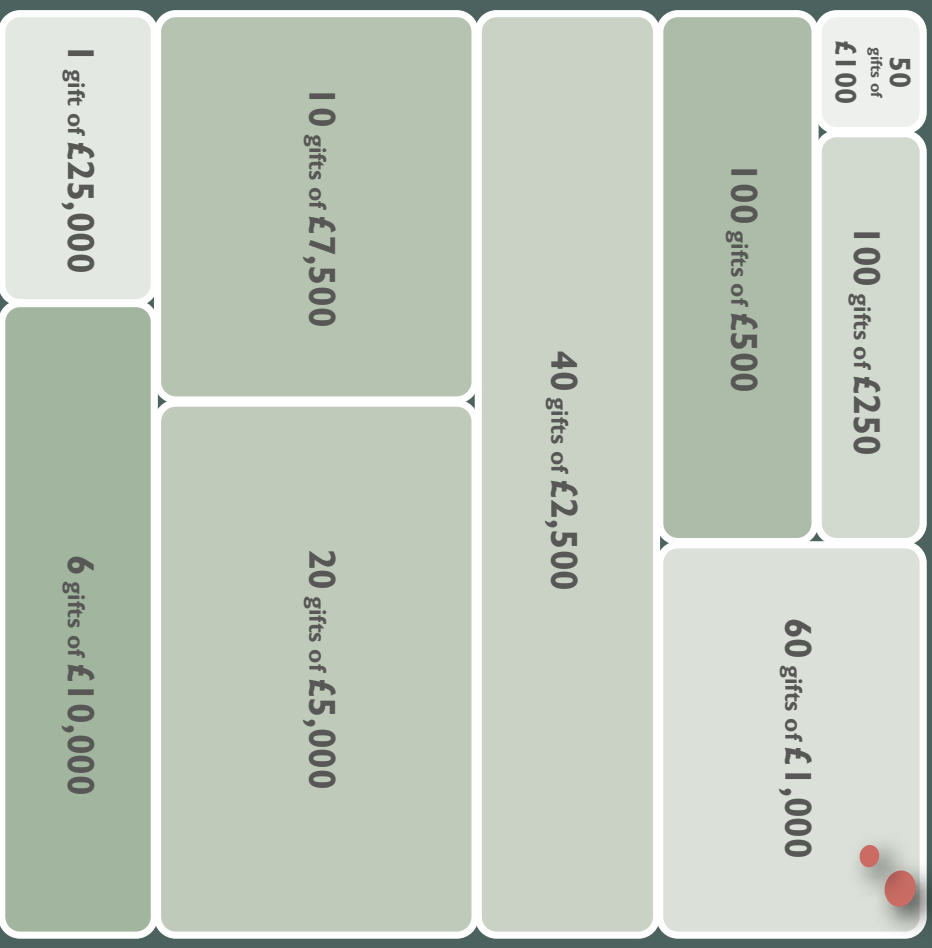


Please pray and consider what God is asking you to give to enable the refurbishment to happen.

£1,000 sounds like a lot of money - but it's only five pounds per week over 3 years...

WHAT COULD YOU GIVE?

Just look at what 400 of us at Christ Church could achieve together



Target - £500,000 in gifts and pledges

HOW OUR GIFTS STACK UP*

- 1 gift of £25,000 pays for new ceilings
- 6 gifts of £10,000 will replace a boiler
- 10 gifts of £7,500 will install the lift
- 20 gifts of £5,000 pays for all the structural alterations
- 40 gifts of £2,500 pays for a new kitchen and toilets
- 60 gifts of £1,000 covers new ventilation
- 100 gifts of £500 pays for the re-decoration
- 100 gifts of £250 pays for an environmental control system
- 50 gifts of £100 covers new audio-visual equipment

*These amounts are given for illustrative purposes only and are not a detailed budget for the works (including labour)