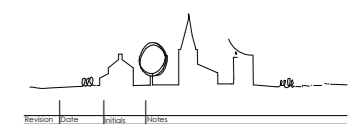
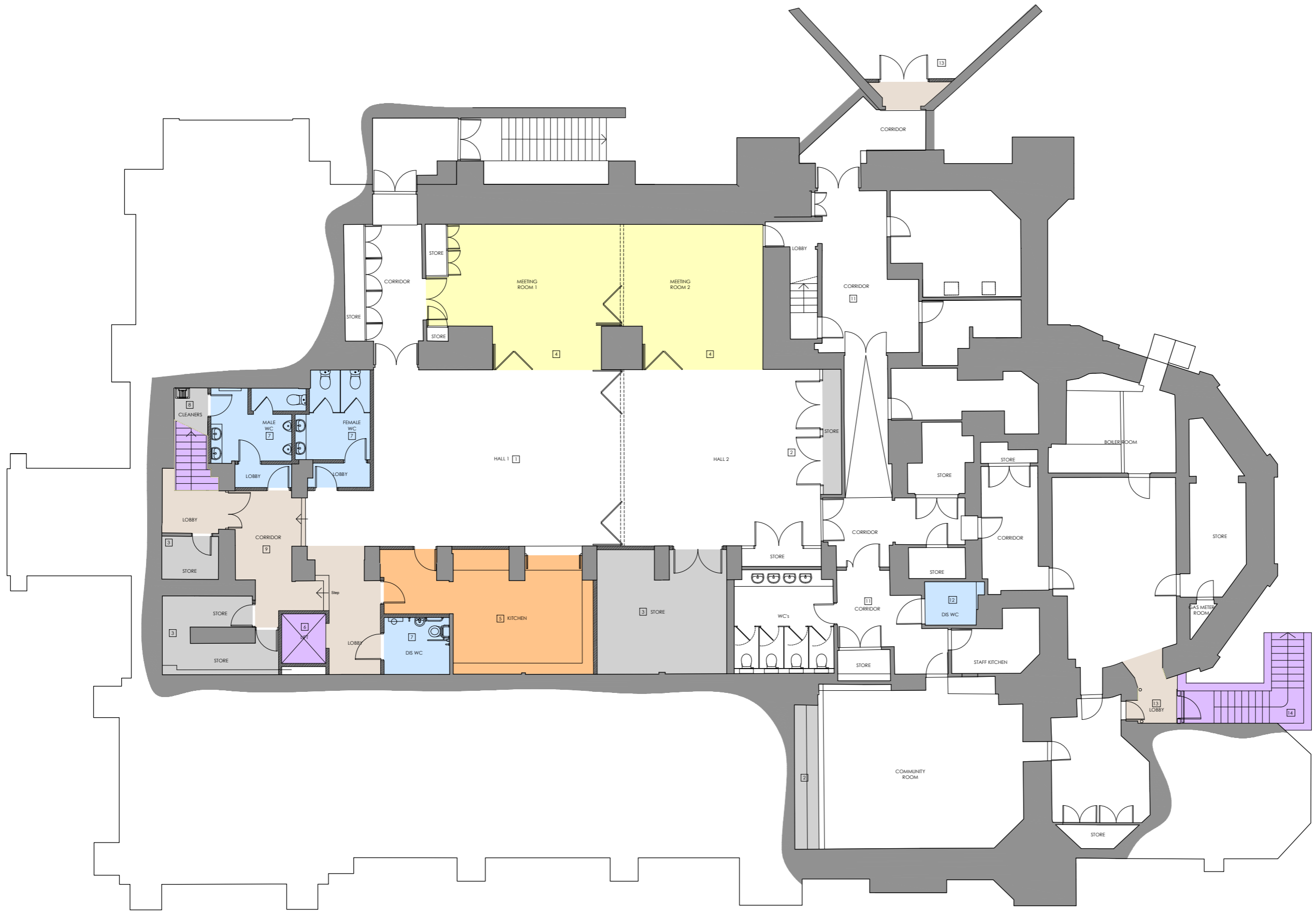


- Notes:
- [1] Refurbish principal room, with new sliding/folding partition wall.
 - [2] New storage cupboards.
 - [3] Store room.
 - [4] Open up wall with new sliding/folding doors.
 - [5] Kitchen (relocated & refurbished).
 - [6] Lift to all floors.
 - [7] New WCs.
 - [8] Cleaner's store.
 - [9] Lobby, with doors to provide some acoustic separation from church.
 - [10] Improve entrance with new doors and enlarged lobby.
 - [11] Refurbish and redecorate existing lobby and circulation areas.
 - [12] Refurbish existing WC.
 - [13] New external lobby allowing more flexible use of adjoining rooms.
 - [14] Rebuild steps to shallower pitch to improve safety. N.B. steps regularly used by preschool.



CLIFTON
 Christ Church

Proposed Lower Ground
 Floor Plan

PRELIMINARY

benjamin + beauchamp
 architecture design conservation
 the borough studios, the borough,
 wedmore, somerset BS28 4EB
 T 01934 713313 F 01934 713314

30/09/15 1:50 at A0
 0311.SK.22